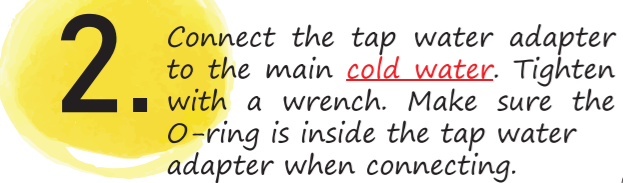
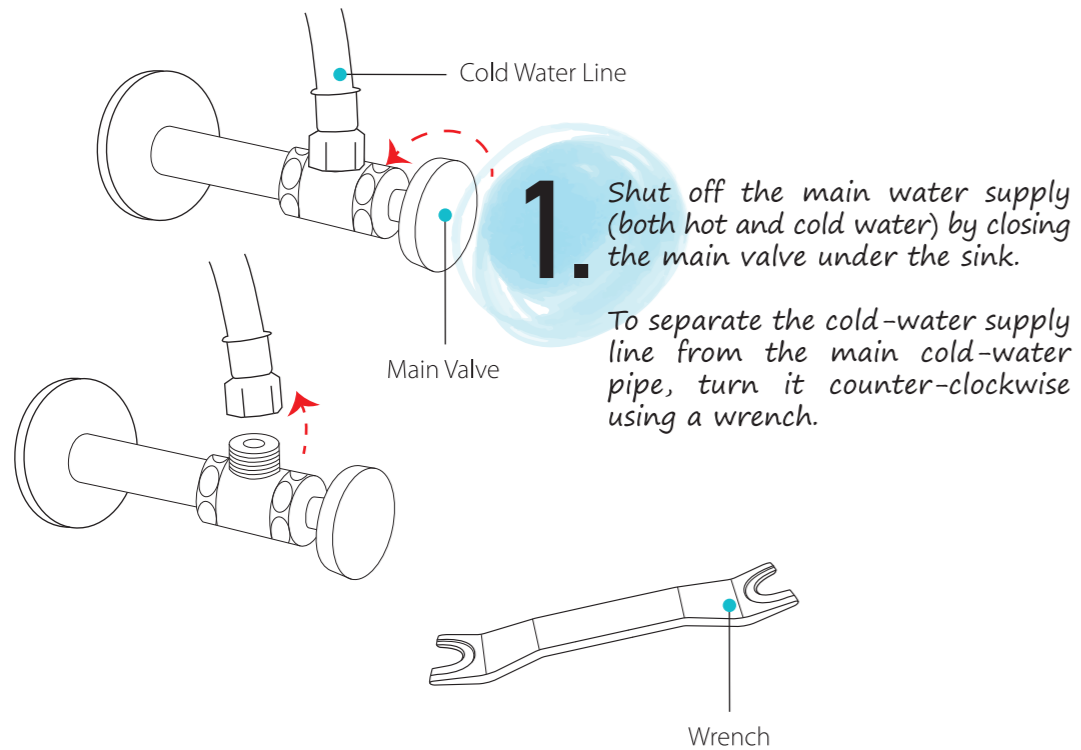
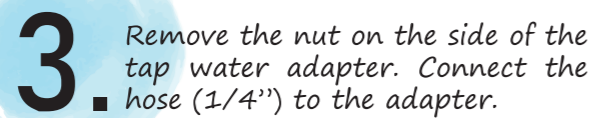
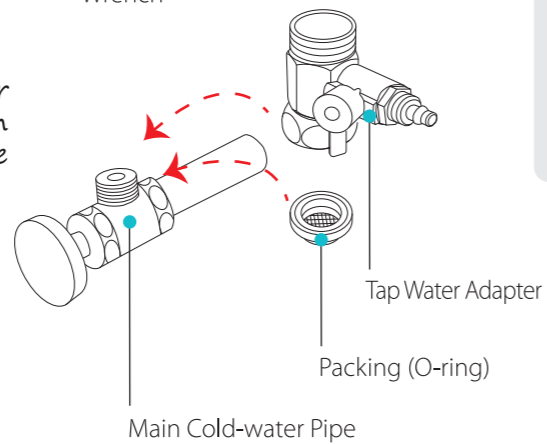


Alpha-U1500/ U1700 Quick Installation

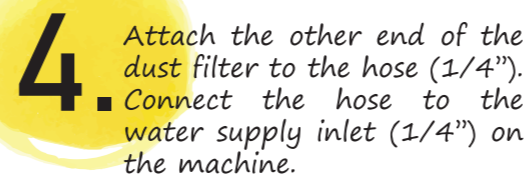
※ To install the faucet on the sink, a 30Ø (mm) hole should be drilled.



Connect the cold-water supply line to the tap water adapter which is now secured to the main cold-water pipe. Tighten with a wrench.



Attach the dust filter to one end of the hose by clicking it in place.



Components

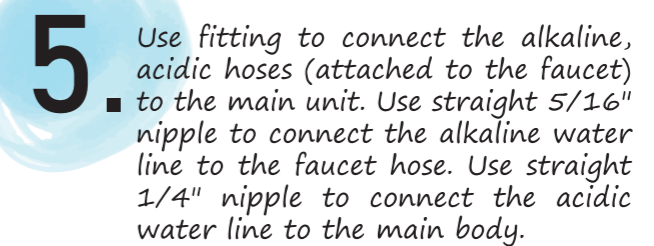
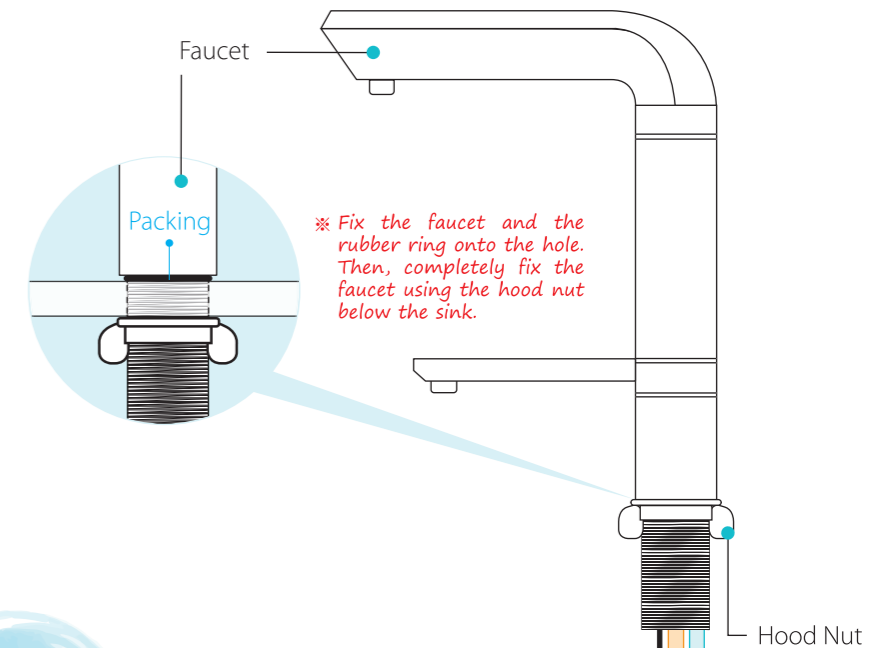
Tap Water Adapter Dust Filter Installation Nails

Alkaline Water Line 5/16" Tubing Hose 1/4"

Straight 1/4" Straight 5/16" Alkaline Water Connection Nipple Stem Elbow 5/16"

Water Source Line Alkaline Tubing

Cable Acidic Tubing



Connect the faucet connection cable to the port at the top of the back of the main unit.

